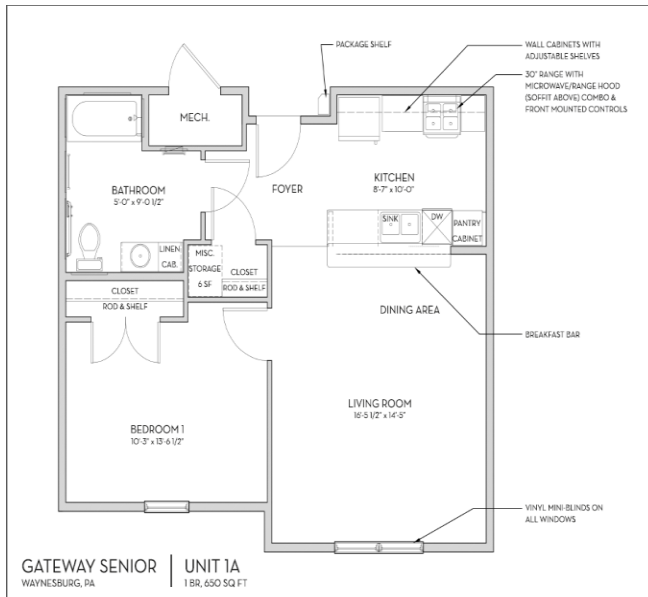
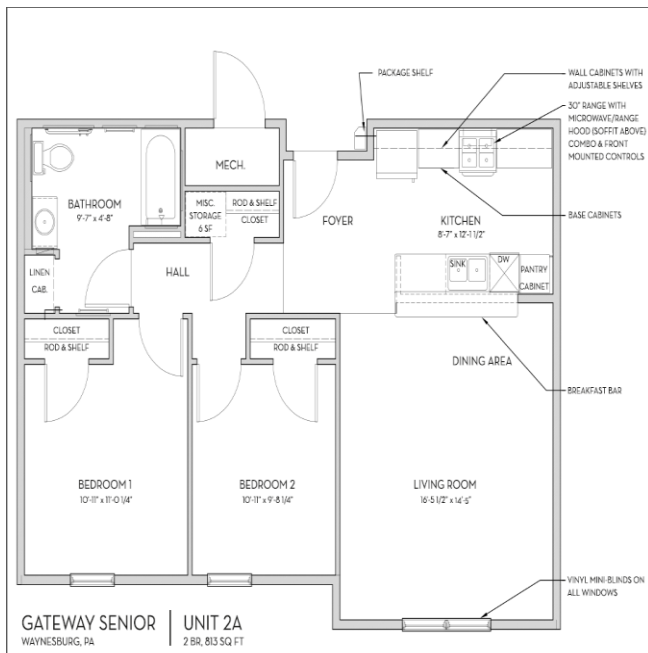


## Typical 1-Bedroom Unit



## Typical 2-Bedroom Unit



## Gateway Senior Housing

Temporary Office: Greene County Building

93 E. High Street, Second Floor Office 216

Waynesburg, PA 15370

Financing Partners and Supporters:

PHFA Boston Financial  
 FHL Bank Pittsburgh Community Bank  
 Boro of Waynesburg Accessible Dreams  
 Waynesburg University SWPA AAA  
 Greene County Housing Team  
 First Federal of Greene County

# Gateway Senior Housing

## Temporary Office:

Greene County Building  
 93 E. High Street  
 Second Floor Office 216  
 Waynesburg, PA 15370

Phone: 724-880-0373

Email:  
[gatewayseior@ndcreatestate.com](mailto:gatewayseior@ndcreatestate.com)



---

## Gateway Senior Housing

**New construction, four story, elevator building consisting of 52 apartments at 330 Nazer Street, Waynesburg, PA. The development is designed to meet the housing needs of persons age 62 and older by providing affordable rental housing and support services to the residents of the building.**

---

- Building Amenities: Fitness center, laundry rooms on the 2<sup>nd</sup> and 4<sup>th</sup> floor and large community room with a large outdoor porch. These spaces will support enhanced living and supportive services that will be offered for senior residents.
- Apartment amenities: Energy Star rated windows and appliances, including a dishwasher, walk in storage closet, central heating and air conditioning.

---

## Income Eligibility

Total household income, must be less than or equal to the pre-set income limit.

Maximum income:

**1 person: \$24,840**

**2 person: \$28,380**

The income limits are based on the local median income and are published annually by the Department of Housing and Urban Development and are based on number of family members.

**MUST BE 62+ YEARS OF AGE OR OLDER**

*Gateway Senior Housing is being developed by Waynesburg Prosperous and Beautiful and PIRHL Developers (PIRHL). Waynesburg Prosperous and Beautiful is a local community organization committed to the improvement of the Boro. PIRHL has extensive experience in the development and construction of affordable housing sites. The property will be managed by NDC Real Estate Management, Inc., a professional Pennsylvania housing management agent with other properties in southwestern Pennsylvania. The Architect for this site is RDL Architects. Other supportive services are offered by the Greene County Housing Team.*

---

The Pennsylvania Housing Finance Agency (PHFA) is providing funds for the construction of the homes under the Low Income Housing Tax Credit Program.

---